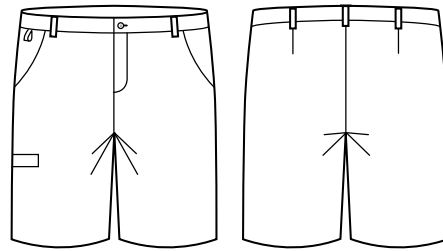




## MENS CARGO SHORT

CL960MS



### COLOURS



### GARMENT MEASUREMENTS

SIZE	72	77	82	87	92	97	102	107	112	117	122	127
½ WAIST RELAXED (CM)	35	37.5	40	42.5	45	47.5	50	52.5	55	57.5	60	62.5
½ WAIST STRETCHED (CM)	39	41.5	44	46.5	49	51.5	54	56.5	59	61.5	64	66.5
IN LEG (CM)	26	26	26	26	26	26	26	26	26	26	26	26

### STYLE F&B

- Subtle elastic waist band that will stretch out when worn
- Elastic waist provides extra comfort and ease of movement by providing an extra ½ size when stretched
- Straight leg short, no side splits
- Designed to finish just above the knee
- 2x front angled side pockets, RHS welt pocket with Velcro closure
- 3cm hem allowance, no inseam allowance
- 6 belt loops
- Key/swipe card loop on RHS pocket

### FABRIC COMPOSITION

- 64% Polyester 34% Viscose 2% Elastane
- Made from a lightweight plain weave fabric, it's breathable and comfortable making it perfect for all climates and health care roles

### CARE DETAILS

- Warm gentle machine wash 40°. Wash inside out with similar colours. Do not bleach, soak or tumble dry. Line dry in shade. Cool iron if required.

### MATCH WITH

- Mix and match with the other Functional lowers from the Biz Care range
- Also a great style for cleaners/hospitality in warmer climates who are after a durable lightweight option

