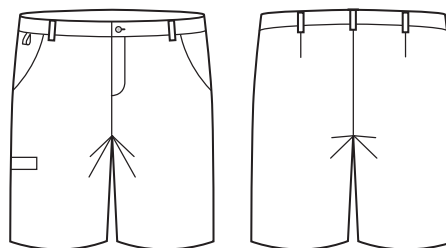




MENS CARGO SHORT

CL960MS



COLOURS



GARMENT MEASUREMENTS

SIZE	72	77	82	87	92	97	102	107	112	117	122	127
½ WAIST RELAXED (CM)	35	37.5	40	42.5	45	47.5	50	52.5	55	57.5	60	62.5
½ WAIST STRETCHED (CM)	39	41.5	44	46.5	49	51.5	54	56.5	59	61.5	64	66.5
IN LEG (CM)	26	26	26	26	26	26	26	26	26	26	26	26

STYLE F&B

- Subtle elastic waist band that will stretch out when worn
- Elastic waist provides extra comfort and ease of movement by providing an extra ½ size when stretched
- Straight leg short, no side splits
- Designed to finish just above the knee
- 2x front angled side pockets, RHS welt pocket with Velcro closure, LHS back welt pocket
- 3cm hem allowance, no inseam allowance
- 6 belt loops
- Key/swipe card loop on RHS pocket

FABRIC COMPOSITION

- 64% Polyester 34% Viscose 2% Elastane
- Made from a lightweight plain weave fabric, it's breathable and comfortable making it perfect for all climates and health care roles

CARE DETAILS

- Warm gentle machine wash 40°. Wash inside out with similar colours. Do not bleach, soak or tumble dry. Line dry in shade. Cool iron if required.

MATCH WITH

- Mix and match with the other Functional lowers from the Biz Care range
- Also a great style for cleaners/hospitality in warmer climates who are after a durable lightweight option

