



MENS SLIM FIT FLAT FRONT PANT 70716R

Tailored from soft polyester viscose fabric, in a refined slim leg shape with pressed creases for a polished look.

DETAILS



SIENA

79% Polyester 17% Viscose 4% Elastane

A lightweight easy care fabric that is soft, and durable. Contains stretch for comfort and Viscose for breathability. Suitable for both functional and corporate roles.

Fabric care instruction:

- Trouser - Warm gentle machine wash. Wash with similar colours. Do not bleach, soak or tumble dry. Line dry in shade. Warm iron. Do not iron over 150°C. Do not dry clean.



COLOURS



GARMENT MEASUREMENTS

SIZE (R)	72R	77R	82R	87R	92R	97R	102R	107R	112R
½ WAIST (CM)	36	38.5	41	43.5	46	48.5	51	53.5	56

STYLE DETAILS

- NEW fit, flat front pant that is tapered through the leg to create a modern tailored leg
- Bar tack at end of pocket opening
- 2x functional jet pockets at back with button closure
- 2 x angled side pockets
- 8 belt loops, allowing pant to sit better around the waist
- 4cm hem allowance
- 1 x spare button
- No pant lining
- Open back seam allowance for easy alterations

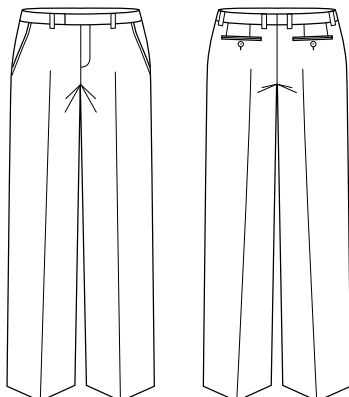
MATCH WITH

- Other styles from the Siena range

RECOMMENDED INDUSTRY

- Corporate/office wear
- Also suitable for non-functional hospitality & healthcare roles

SPEC DRAWING





MENS SLIM FIT FLAT FRONT PANT 70716S

Tailored from soft polyester viscose fabric, in a refined slim leg shape with pressed creases for a polished look.

DETAILS



SIENA

79% Polyester 17% Viscose 4% Elastane

A lightweight easy care fabric that is soft, and durable. Contains stretch for comfort and Viscose for breathability. Suitable for both functional and corporate roles.

Fabric care instruction:

- Trouser - Warm gentle machine wash. Wash with similar colours. Do not bleach, soak or tumble dry. Line dry in shade. Warm iron. Do not iron over 150°C. Do not dry clean.



COLOURS



GARMENT MEASUREMENTS

SIZE (S) 107S 112S 117S 122S 127S

½ WAIST (CM) 53.5 56 58.5 61 63.5

STYLE DETAILS

- NEW fit, flat front pant that is tapered through the leg to create a modern tailored leg
- Bar tack at end of pocket opening
- 2x functional jet pockets at back with button closure
- 2 x angled side pockets
- 8 belt loops, allowing pant to sit better around the waist
- 4cm hem allowance
- 1 x spare button
- No pant lining
- Open back seam allowance for easy alterations

MATCH WITH

- Other styles from the Siena range

RECOMMENDED INDUSTRY

- Corporate/office wear
- Also suitable for non-functional hospitality & healthcare roles

SPEC DRAWING

